



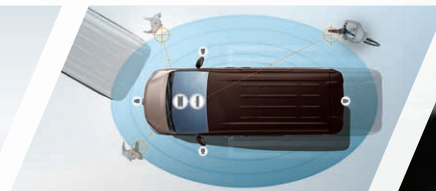
Innovation
that excites

ALL-NEW
SERENA



DESIGNED FOR YOUR PEACE OF MIND.

Shielding you on every journey, the All-New Serena promises the highest level of safety for all on board.



INTELLIGENT AROUND VIEW MONITOR (I-AVM)

The system uses four cameras to give you a 360° bird's-eye view of the vehicle for easier navigation.

INTELLIGENT MOVING OBJECT DETECTION (I-MOD)

I-MOD system detects and alerts the driver of moving objects surrounding the vehicle.

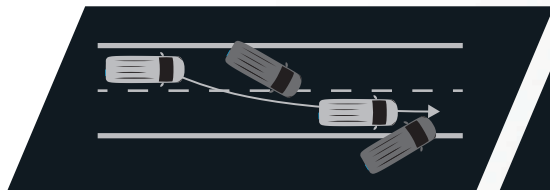


6 SRS AIRBAGS

The SRS airbags include dual front, side and curtain airbags that reduce the risk of injury resulting from impacts of various angles.

INTELLIGENT DRIVER ALERTNESS (I-DA)

Helps alert potential driver fatigue (drowsy driving) and inattention.



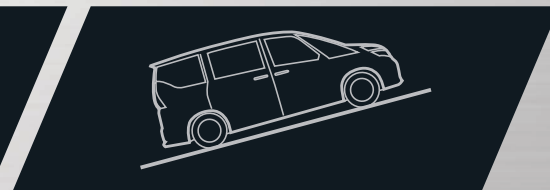
VEHICLE DYNAMIC CONTROL (VDC)

The VDC system can help the driver to maintain control of the vehicle to prevent understeer or oversteer.



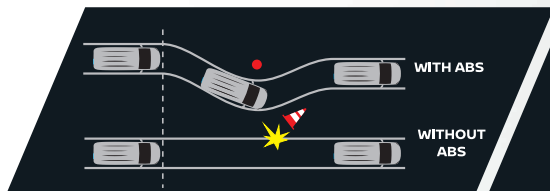
TRACTION CONTROL SYSTEM (TCS)

Helps you maintain your steered path by reducing engine output and/or applying brake pressure to specific wheels when slip is detected.



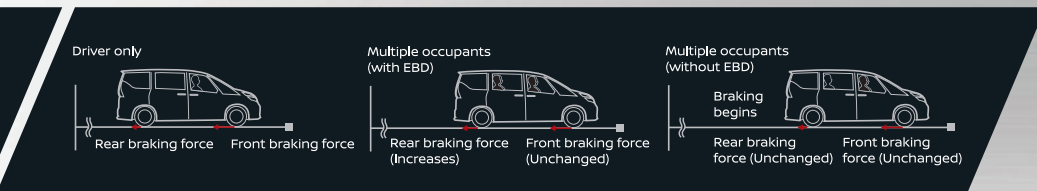
HILL START ASSIST (HSA)

Up, up, and smoothly away. HSA helps prevent rollback when starting on an incline.



ANTI-LOCK BRAKING SYSTEM (ABS)

Helps preserve vehicle stability and steering control in emergency braking situations.



ELECTRONIC BRAKE-FORCE DISTRIBUTION (EBD)

Minimises the difference in braking performance whether the vehicle load is light or heavy.

BRAKE ASSIST (BA)

Generates better braking force than a conventional brake booster even with light pedal force.



LEATHER SHIFT KNOB
Durable and stylish, it adds to the overall interior premiumness.

INTELLIGENT KEY (I-KEY) AND PUSH START IGNITION
Lock, unlock and start your engine with a push of a button without taking out the I-Key from your pocket or bag.

DUAL ZONE AUTO CLIMATE CONTROL
Maintains own ideal temperatures for 1st row and rear occupants.

CRUISE CONTROL SYSTEM
Maintain a steady speed on highways to optimise fuel economy.

PREMIUM AND MODERN INTERIOR.



CLARION 6.75-INCH ADVANCED DISPLAY AUDIO WITH 6 SPEAKERS

Vehicle and smartphone are in perfect synergy with Apple CarPlay™ and Android Auto™.



7-INCH ADVANCED DRIVE-ASSIST DISPLAY (ADAD) AND DIGITAL SPEEDOMETER

Convenient display of various vehicle information:

- Tachometer
- Intelligent Around View Monitor
- ECO Pedal Guide



FLAT BOTTOM LEATHER STEERING WHEEL

A redesigned steering wheel that provides convenience with ADAD and cruise control switches.



DRIVING VIDEO RECORDER (DVR)*

With WIFI connectivity, delivering you peace of mind no matter driving on the road or when your vehicle is parked.

ENGINEERED FOR RESPONSIVENESS AND FUEL EFFICIENCY.



MR20DD
Max Power:
150PS / 6,000rpm

Max Torque:
200Nm / 4,400rpm



Energy Efficient Vehicle

Fuel Consumption
14.2km/L (NEDC R101)

NISSAN's 2.0L TWIN CVTC (CONTINUOUSLY VARIABLE VALVE TIMING CONTROL) engine is paired with XTRONIC CVT (CONTINUOUSLY VARIABLE TRANSMISSION) WITH ADAPTIVE SHIFT CONTROL (ASC) to deliver a powerful drive with class-leading fuel economy.

The S-HYBRID system is mounted with an upgraded ECO MOTOR that controls the idling stop system and provides additional torque assist in start-up acceleration.

New DUAL ARM TENSIONER (DAT) in the engine keeps optimal tensile force on the belt to reduce friction, power lost and increase fuel efficiency.

ECO MODE assists the driver to drive in a way that contributes to improved fuel efficiency.

EASE OF DRIVING & HANDLING ENHANCEMENT.



**WHEELHOUSE
SOUND-ABSORBING
LINER**

Improved cabin
quietness.

**STIFFER FRONT & REAR SUSPENSION
MOUNTING, WITH HIGH PERFORMANCE
VALVE IN SHOCK ABSORBER**

Delivers a more stable and comfortable ride.

**INCREASE STEERING
RACK GEAR RATIO**

Quicker turning through
reduced steering wheel
lock-to-lock turns.

**VARIABLE ASSIST
ELECTRIC POWER
STEERING**

Light steering feel at low
speed. Firm feel at higher
speed for improve
stability.

15-INCH ALLOY WHEEL

Translates to even more
ride comfort.

NEW GENERATION GLOBAL DESIGN LANGUAGE.

To create a more dynamic and sporty styling.



DUAL BACK DOOR

Easily access the boot by only opening top half of the back door.



CARGO SPACE

Fold the 3rd row seats for more cargo space.



S-SHAPED LED TAIL LAMP

Radiates strong visual appeal with optimum illumination.

FLOATING ROOF DESIGN

Highlights the spacious cabin.



CAPLESS FUEL FILLER

Makes refueling easier, as there is no need to remove the fuel cap.

HANDS-FREE DUAL POWER SLIDING DOOR

Simple quick kick below the door to open or close, when your hands are full.



DIAMOND CUT 16-INCH ALLOY WHEEL*

Enhances the sporty appearance.

V-MOTION STRUT GRILLE

Boldly accentuates Nissan's signature design.

DUAL LAYER LED PROJECTOR HEADLAMP WITH SIGNATURE LAMP

Projects long-range illumination for improved visibility.

Actual car specifications may vary from picture shown. *Available for Premium Highway Star only.

REFINED, DOWN TO THE VERY LAST DETAIL.

Every inch of the All-New Serena exudes elegance right down to the smallest details, where premium design meets spacious functionality.

13 SEAT
CONFIGURATIONS



ZERO GRAVITY INSPIRED SEATS

Shaped to fit the body's natural posture for greater comfort and less fatigue.

COMBINATION LEATHER SEATS (TWO-TONE TRUFFLE BROWN/CHESTNUT OR SINGLE-TONE BLACK)*

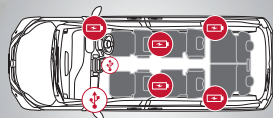
Quality interiors with a luxurious premium finish.

EXCLUSIVE 2ND ROW CAPTAIN SEATS WITH DUAL ARMREST

Each seat is ergonomically crafted with total comfort in mind.

3RD ROW SLIDING SEATS WITH TIP-UP TO FOLD FUNCTION

Provides even more cargo carrying capacity when third row seats are not required.



7 USB-POWERED PORTS

For each passenger's electronic device charging needs.



POWER SLIDING DOOR CONTROL SWITCH (left hand side only) FOR 3RD ROW & 2ND ROW SEATBACK SLIDING FUNCTION

Getting out from the 3rd row seats have never been easier.



ISOFIX

ISOFIX CHILD SEAT RESTRAINT SYSTEM (FOR 2ND ROW SEATS)

Provides a more secure and safer way to attach child seats.



10.1 INCH ROOF-MOUNTED LCD PANEL*

Entertainment solution to keep the passengers occupied on every journey.

Actual car specifications may vary from picture shown. *Available for Premium Highway Star only.

THOUGHTFUL CONVENIENCES.

14 cup/bottle holders. 10 storage compartments. 4 "teh tarik/tar-pau" hooks. Plenty of storage for everything!



FRONT CUP HOLDERS (X2)



FRONT ROW BOTTLE HOLDER (X2)



2ND ROW BOTTLE HOLDER (X2)



3RD ROW BOTTLE HOLDER (X4)



"TEH-TARIK" / "TAR-PAU" HOOKS (X2)



"TEH-TARIK" / "TAR-PAU" HOOKS (X4)



**PERSONAL TABLE (X2)
CUP HOLDER (X4)**



"TECH-ON" TRAY MAT*



MULTIPLE WAYS TO USE BOTH HOOKS



"SMART TAG" COMPARTMENT



DRIVER COMPARTMENT



CENTER CLUSTER COMPARTMENT



FRONT PASSENGER COMPARTMENT



GLOVE COMPARTMENT



GLOVE BOX



SEAT BACK POCKET (X4)



2ND ROW SUN SHADES



DOOR VISOR*



LED ROOM LAMP*



V-KOOL 4Mil SECURITY FILM TINTING*

*Actual car specifications may vary from picture shown. *Available for Premium Highway Star only.*

VEHICLE SPECIFICATIONS

Variant		2.0L HIGHWAY STAR	2.0L PREMIUM HIGHWAY STAR
Engine Code		MR20DD with Dual Arm Tensioner (DAT)	
Engine Type		DOHC with Twin CVTC (Continuously Variable-valve Timing Control), 4-Cylinder, 16-Valve, Direct Fuel Injection	
Displacement	(cc)	1,997	
Max. Power	kw (PS) / rpm	110 (150) / 6,000	
Max. Torque	Nm (kg-m) / rpm	200 (20.4) / 4,400	
S-Hybrid System		ECO Motor with Electric Power Regenerator & Secondary Battery, Idling Start / Stop System, Torque Assist	
Transmission		XTRONIC CVT (Continuously Variable Transmission) with Adaptive Shift Control (ASC)	
Min. Turning Radius	m	5.5	
Suspension			
Suspension	Front	Independent MacPherson Struts	
	Rear	Torsion Beam Axle	
Dimensions			
Overall Length	mm	4,770	
Overall Width	mm	1,740	
Overall Height	mm	1,865	
Wheelbase	mm	2,860	
Wheel Size		15" Alloy	16" Alloy
Tyre Size		195 / 65 R15	205 / 55 R16
Exterior			
Headlamp		Automatic LED Projector with Auto Leveling & LED Signature Lamp	
Front Fog Lamp with Daytime Running Light (DRL)		With	
Hands-Free Dual Power Sliding Doors		With	
Dual Back Door		With	
Roof Spoiler		With	
Interior			
Steering Wheel		Leather Wrapped Steering with Advanced Drive Assist Display (ADAD) & Cruise Control Switches	
Fine Vision Meter		7-inch Full Colour Advanced Drive Assist Display (ADAD)	
Intelligent Key (I-Key) with Push Start Ignition		With	
6 Speaker Audio System		Premium 6.75-inch Clarion Advanced Display Audio with Smart Device Link (SDL), Apple CarPlay™ & Android Auto™	
Air Conditioning		Front: Dual Zone Auto Climate Control, Rear: Digital Switches for 2nd & 3rd Row Vents	
Seat Material		Fabric	Combination Leather (Two-Tone Truffle Brown/ Chestnut or Single-Tone Black)
Zero Gravity Inspired Seats		Driver, Passenger & 2nd Row	
Exclusive 2nd Row Captain Seats with Armrest & Long Slide Function		With	
7 USB-Powered Ports		With	
Nissan Safety Shield			
Intelligent Around View Monitor (I-AVM)		With	
Intelligent Moving Object Detection (I-MOD)		With	
Intelligent Driver Alertness (I-DA)		With	
6 SRS Airbags		Front Airbag x 2, Side Airbag x 2 & Full-length Curtain Airbag x 2	
ISOFIX Child Seat Restraint System (for 2nd Row Seats)		With	
Anti-Lock Braking System (ABS) with Electronic Brake Force Distribution (EBD) & Brake Assist (BA)		With	
Vehicle Dynamic Control (VDC) & Traction Control System (TCS)		With	
Hill Start Assist (HSA)		With	

HIGHWAY STAR

PREMIUM HIGHWAY STAR | EXCLUSIVE TWO-TONE EXTERIOR

							
Cashmere Gold M114	Tungsten Silver M069	Brilliant White S205	Diamond Black* M091	Roof Diamond Black Body Imperial Red D917	Roof Imperial UMBER Body Cashmere Gold D143	Roof Diamond Black Body Tungsten Silver D916	Roof Diamond Black Body Brilliant White D915

**Diamond Black colour is available for both Highway Star and Premium Highway Star variant.*
Actual car specifications may vary from picture shown.



EDARAN TAN CHONG MOTOR SDN. BHD. (230669-H)
A subsidiary of Tan Chong Motor Holdings Berhad (12969-P)
www.nissan.com.my

Nissan Customer Care Centre: **1800 88 3838**

Edaran Tan Chong Motor Sdn Bhd reserves the right to make any changes without notice concerning colours, equipment or specifications detailed in this brochure, or to discontinue individual models. The colours of vehicles delivered may differ slightly from those in the brochure. The specifications vary for different countries depending on local market conditions. Please consult your local dealer to ensure that the vehicle delivered is in accordance with your expectations.



Terms & conditions apply.